

# Introduction to the German case study region

Franziska Lengerer, Annett Steinführer



2<sup>nd</sup> project meeting  
Osterode am Harz  
November 20-22, 2019

# Case study district: Landkreis Göttingen in Lower Saxony



# Case study district: Landkreis Göttingen in Lower Saxony

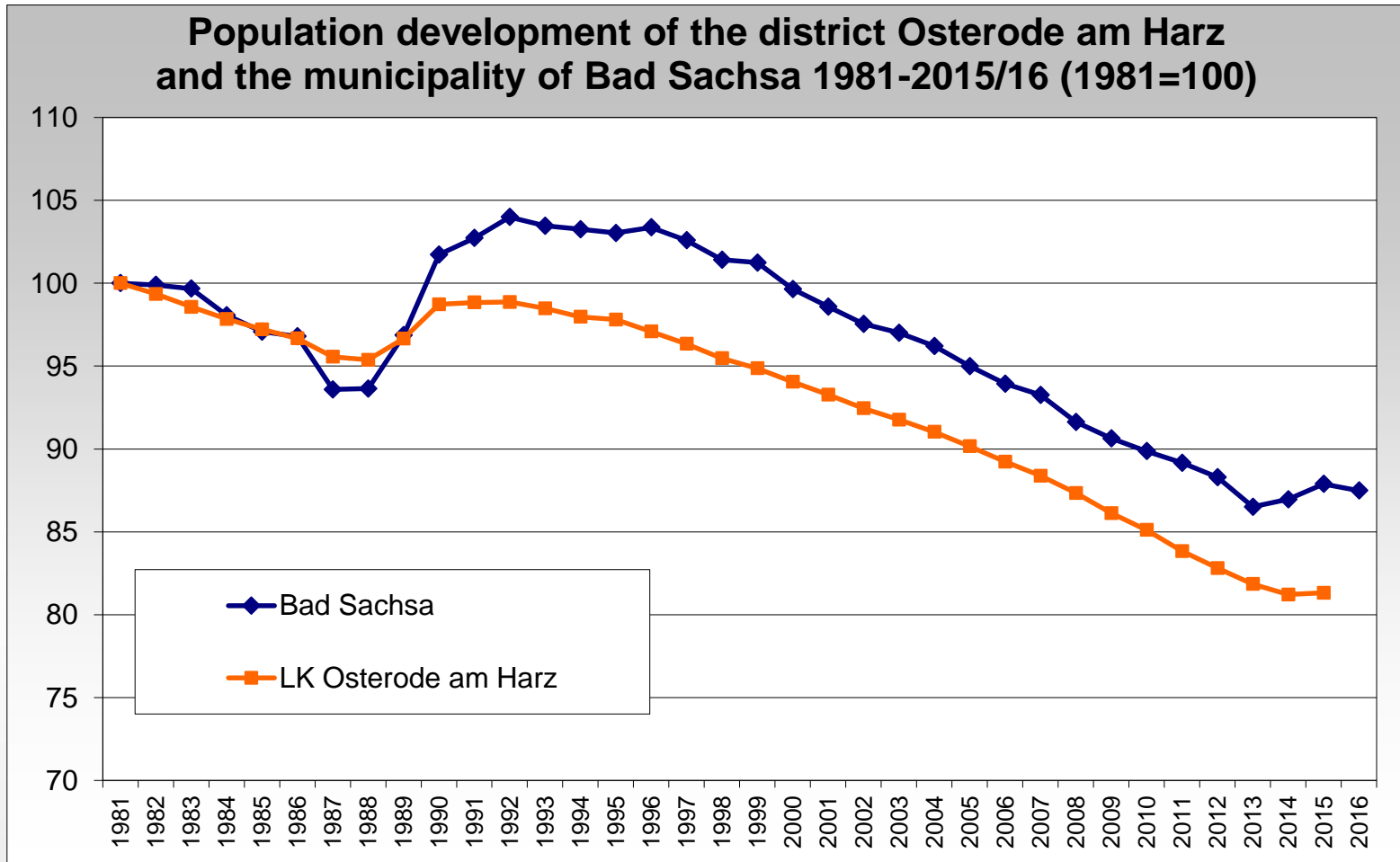
## Two separate Landkreise (districts) until 2016

- **45 municipalities** with between 400 and 24,000 inhabitants (+ City of Göttingen: 120,000 inhabitants)
- Population density:  
**LK Göttingen (new): 187 persons/km<sup>2</sup>**  
LK Göttingen (old): 228 persons/km<sup>2</sup>  
LK Osterode (old): 116 persons/km<sup>2</sup>



Source: <https://www.landkreisgoettingen.de>

# Case study district: population development in the past decades



Source: LSN Online 2019. URL: <https://www1.nls.niedersachsen.de/statistik/default.asp>

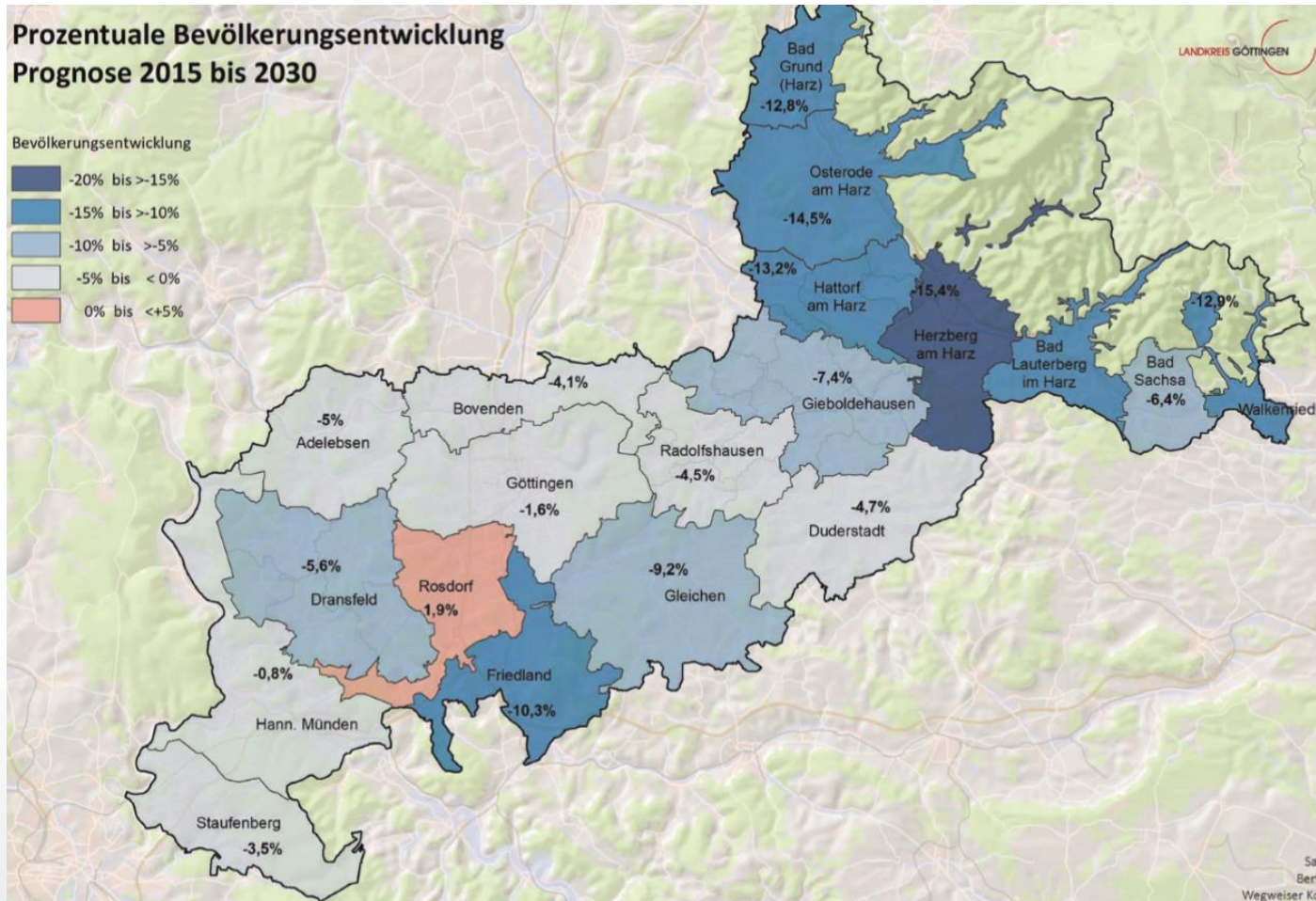
# Case study district: recent population development

	Population development 2011-2015
Germany	2.3
Western Germany	2.5
Eastern Germany	1.4
<b>Göttingen</b>	<b>3.1</b>
<b>Osterode am Harz</b>	<b>-3.0</b>

Source: INKAR 2019. URL: <https://www.inkar.de/>



# Population projection 2015-2030 (change in %)

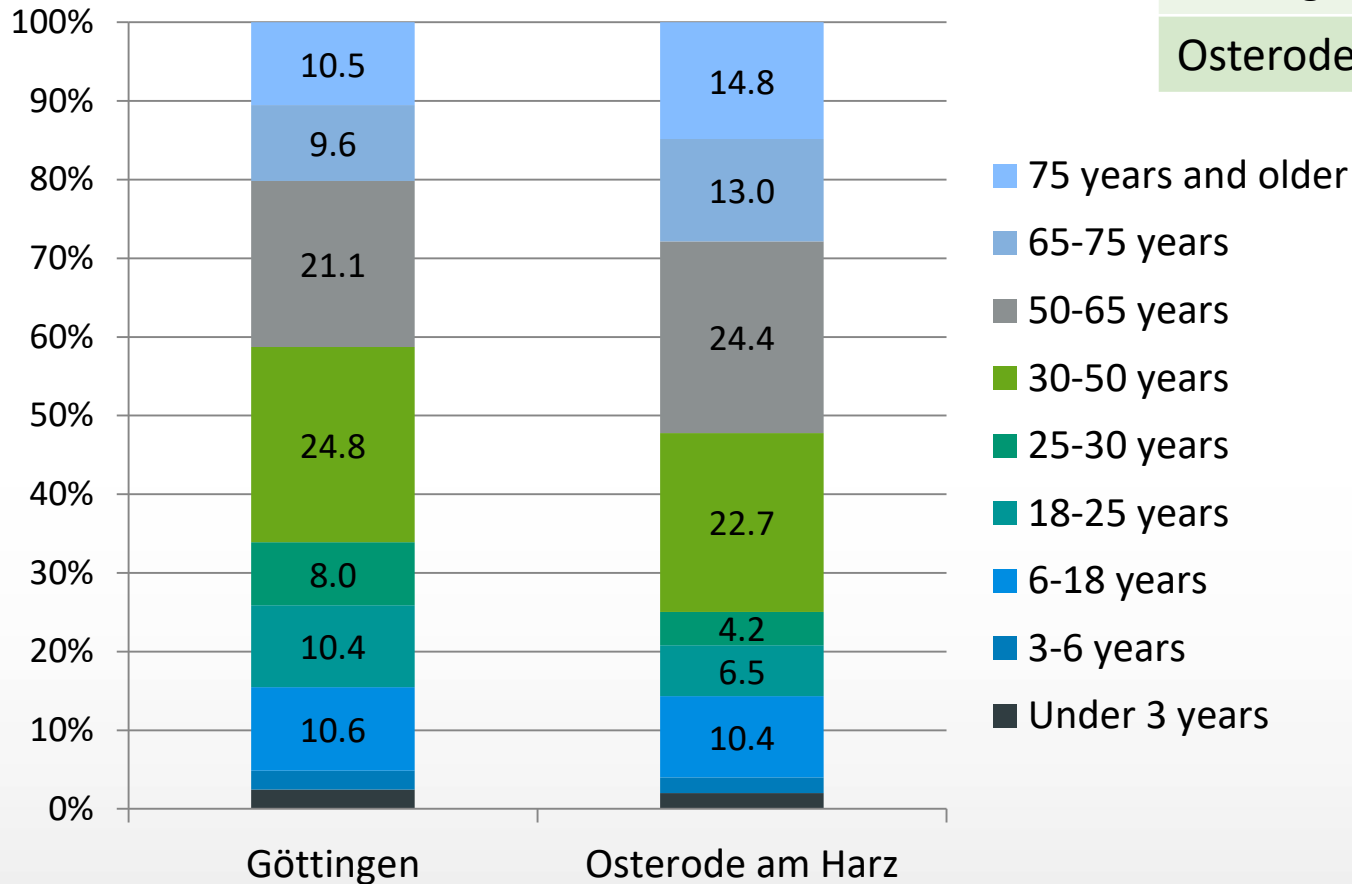


Source: ILS 2018, p. 27.

URL: [https://www.ils-forschung.de/files\\_publicationen/pdfs/20180718\\_daseinsvorsorgeatlas\\_go\\_klein.pdf](https://www.ils-forschung.de/files_publicationen/pdfs/20180718_daseinsvorsorgeatlas_go_klein.pdf)

# Age structure in 2015

	Average age
Germany	43.9
Göttingen	42.9
Osterode a.H.	48.2



Data source: INKAR 2019. URL: <https://www.inkar.de/>

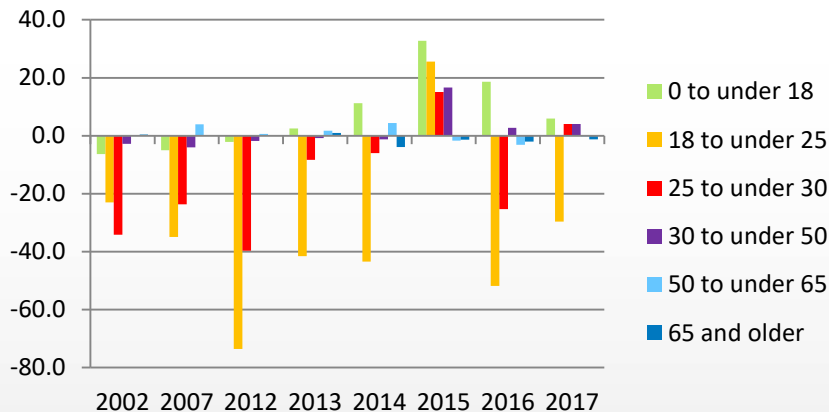
# Main regional centre: town of Osterode am Harz

## Population

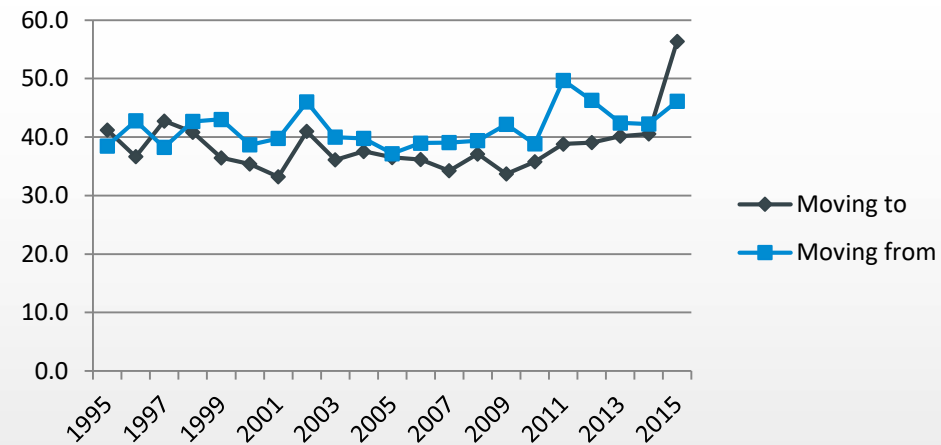
- 1989: 26,714 ■ 1999: 26,024 ■ 2009: 23,675
- 2017: 21,671 inhabitants



Migration balance 2002-2017  
per 1,000 inhabitants



Persons moving to and from Osterode am Harz  
1995-2015 per 1,000 inhabitants





# Main regional centre: town of Osterode am Harz

WIRTSCHAFT | LANDFLUCHT

## Diese deutsche Stadt stirbt am schnellsten

Veröffentlicht am 20.08.2015 | Lesedauer: 6 Minuten

Von Valentin Frimmer



Osterode im Harz leidet unter Landflucht: Nirgends sonst kommen pro Todesfall so wenige Kinder auf die Welt wie hier

Quelle: dpa/spf/jol

Geschlossene Schwimmbäder, verödete Geschäfte: Osterode am Harz steht exemplarisch für die Landflucht der Jungen. Hier wird mehr gestorben als geboren. Ein Besuch in der Stadt der beigen Hosen.



# Case study region

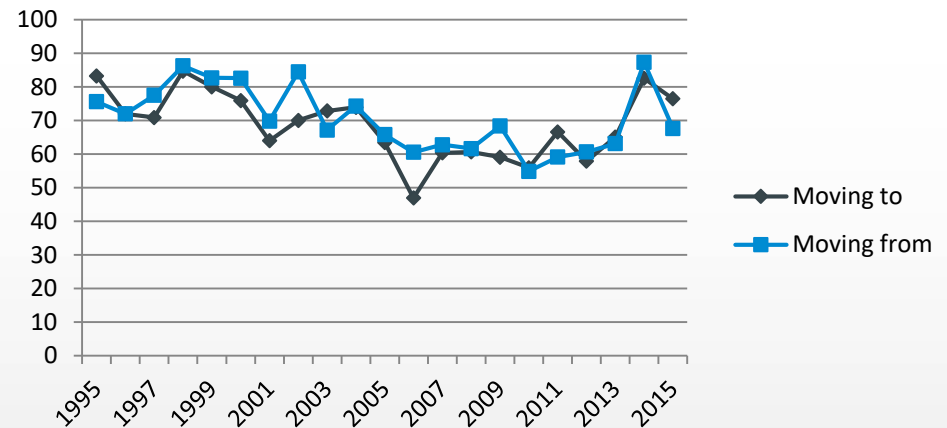


# Walkenried with 2 of our case study villages

- Walkenried (2,195 inhabitants in 2018)
- **Zorge** (983 inhabitants in 2018)
- **Wieda** (1,242 inhabitants in 2018)

- **Population density** in 2017:  
212 persons per km<sup>2</sup>
- **Population development**  
2011-2015: -5.6%

**Persons moving to and from Walkenried  
1995-2015 per 1,000 inhabitants**



Data sources: INKAR 2019. URL: <https://www.inkar.de/>

Landkreis Göttingen 2019. URL: <https://www.landkreisgoettingen.de/>

# Village 1: Zorge



Source: Franziska Lengerer



# Village 2: Wieda



Sources: Mathias Dingerdissen; [www.walkenried-tourismus.de](http://www.walkenried-tourismus.de)

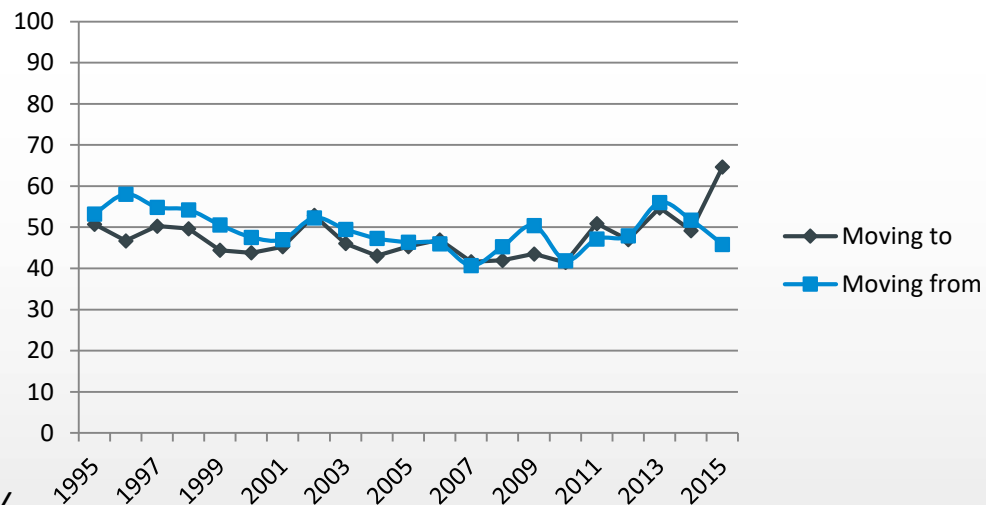


# Bad Lauterberg with 2 of our case study villages

- Bad Lauterberg (6,777 inhabitants in 2018)
- Barbis (2,510 inhabitants in 2018)
- **Bartolfelde** (748 inhabitants in 2018)
- **Osterhagen** (663 inhabitants in 2018)

- **Population density** in 2017:  
250 persons/km<sup>2</sup>
- **Population development**  
2011-2015: -3.0%

Persons moving to and from Bad Lauterberg  
1995-2015 per 1,000 inhabitants



Data sources: INKAR 2019. URL: <https://www.inkar.de/>

Landkreis Göttingen 2019. URL: <https://www.landkreisgoettingen.de/>

# Village 3: Bartolfelde



Source: Franziska Lengerer



The company *Schierker Feuerstein* produces regionally well-known schnapps.

# Village 4: Osterhagen



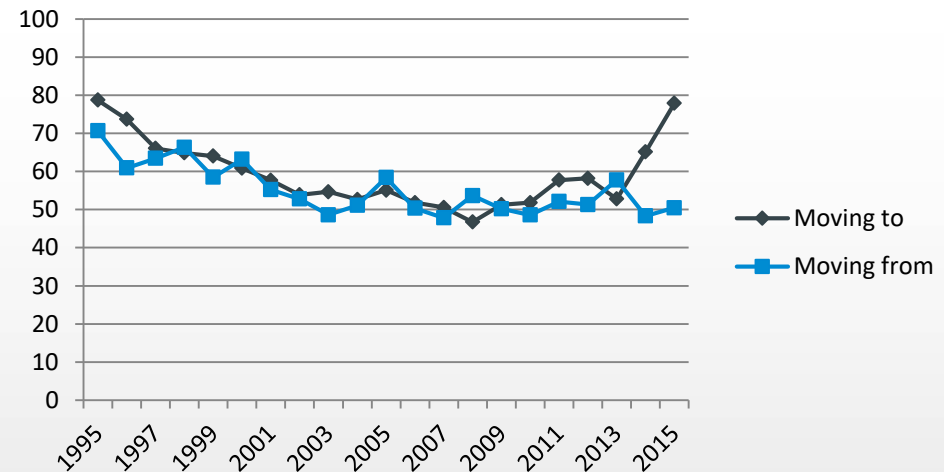
Source: Mathias Dingerdissen



# Bad Sachsa with 3 of our case study villages

- Bad Sachsa (7.392 inhabitants in 2018)
- **Neuhof** (623 inhabitants in 2018)
- **Steina** (685 inhabitants in 2018)
- **Tettenborn and Tettenborn Kolonie** (594 inhabitants in 2018)
- **Population density** in 2017:  
250 persons/km<sup>2</sup>
- **Population development**  
2011-2015: -3.0%

Persons moving to and from Bad Sachsa  
1995-2015 per 1,000 inhabitants



Data sources: INKAR 2019. URL: <https://www.inkar.de/>

Landkreis Göttingen 2019. URL: <https://www.landkreisgoettingen.de/>



# Village 5: Steina



Source: Harz Studie



# Village 6: Neuhof





Source: Harz-Studie

# Village 7: Tettenborn



Sources: Franziska Lengerer, Alexandra Tautz

**The village's equipment (past and present): the example of Tettenborn** *(source: Steinführer et al. 2012, updated)*

	Facility	Existed when?	Today
<b>Transport</b>	Train connection	(station) 1869–1976	
	Bus connection	Since ?	✓
<b>Technical infrastructure</b>	Electricity	Since 1913	✓
	Telephone connection	1913–1920 (public), private ones since 1960s	✓
	Water pipeline	Since 1933/34	✓
	Sewage system (pump station)	Since 1994/95	✓
	Internet	16 MBit/s since 2012	✓
<b>Cultural offers</b>	Community centre	(since 1972; = former school building)	✓
	Border museum	1992-2016 (moved to Bad Sachsa)	—
	Pub 1	Since ?	✓
	Pubs 2–5	Last one closed down in 1980s	—
	Youth and qualification centre	Since 1983	✓
	Parish hall	Since 1962	✓
<b>Education</b>	Grammar school	Before 1820 until 1972	—
<b>Supply and services</b>	Grocery stores 1–4	Closed down in 1980s/2000s; last: 2002	—
	Bakeries 1–3, butcheries 1–2	Until ?	 
	Greengrocery 1–2	(1: 1957–1960) (2: until ?)	—
	Branch bank	Until ?	—
	Post office	1940s until 1995	—
<b>Child care</b>	Kindergarten (parent initiative)	2002–2010	—
<b>Medical care</b>	General practitioner	Ever existed?	—
<b>Public safety</b>	Voluntary firefighters	Since ca. 1830 (partly obligatory service)	✓
	Police	Until mid-1960s	—
<b>Public administration</b>	Local government	Until 1972	—
	Customs facilities	Until ?	—